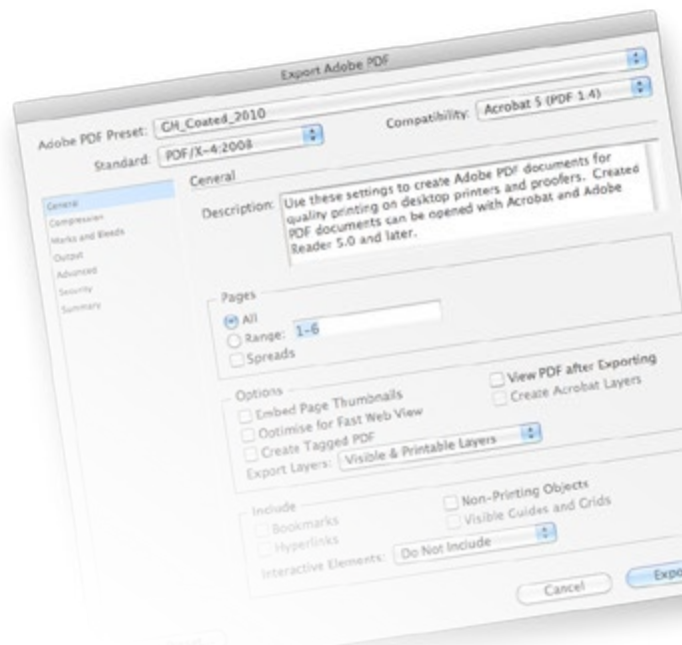
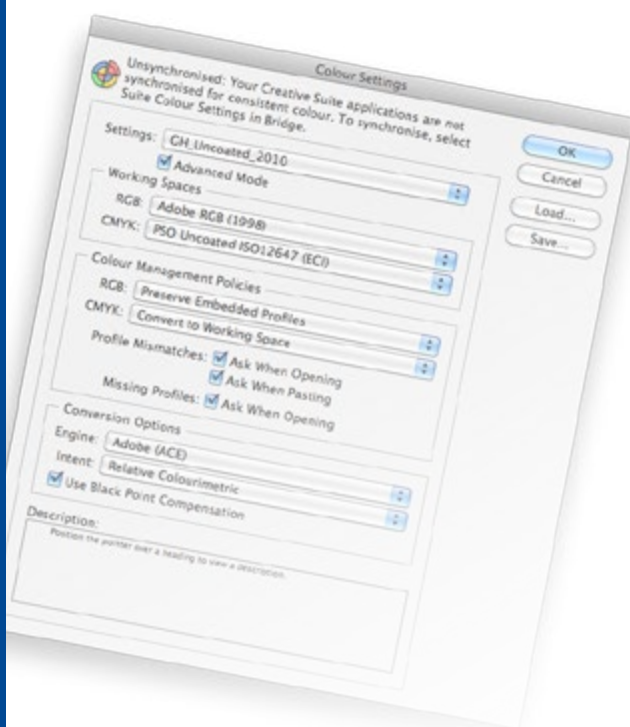


PDF-export fra Indesign

Manual for håndtering av icc-profiler, Colour Settings- og Adobe PDF Preset-filer. Inneholder også download-linker.



ICC-profiler og Colour Settings-filer:

I henhold til ISO 12647-2 benytter vi “ISOcoated_v2_300_eci.icc” til bestrøket papir og “PSO_Uncoated_ISO12647_eci.icc” til ubestrøket papir.

ICC-profilene skal legges flg. plass (Macintosh):

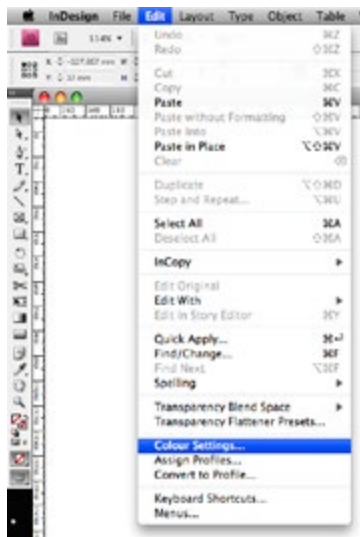
Macintosh HD → Bibliotek → Application Support → Adobe → Color → Profiles → Recommended

(PC): Høyreklikk på icc-profilen og velg “Installer icc-profil”.

Colour Settings-filene skal legges flg. plass (Macintosh):

Macintosh HD → Bibliotek → Application Support → Adobe → Color → Settings → Recommended

(PC): C:\Documents and Settings\
(bruker)\Programdata\Adobe\Color\Settings



Etter at icc- og settingsfilene er på plass, åpnes Adobe Indesign. Velg “Colour Settings” i “Edit”-menyen. Velg riktig “Settings” i henhold til papiret som jobben skal trykkes på.

Settingsfilene virker på samme måte i Adobe Photoshop. (“Edit”-meny → Colour Settings).

Tips!: Ved å definere Colour Settings i Adobe Bridge vil alle Adobe CS-programmene ha samme innstilling.



Innstillinger for bestrøket papir



Innstillinger for ubestrøket papir

Adobe PDF Preset filer:

Adobe PDF Preset filene skal legges flg. plass (Macintosh):

Macintosh HD → Bibliotek → Application Support → Adobe PDF → Settings

(PC): C:\Documents and Settings\{bruker}\Programdata\Adobe\Adobe PDF\Settings

Profile or Policy Mismatch:

Dersom man åpner et Indesign-dokument som ble opprettet med avvikende innstillinger fra den aktive Colour Settingsfilen din; vil man få opp en dialogboks der man må foreta noen valg.

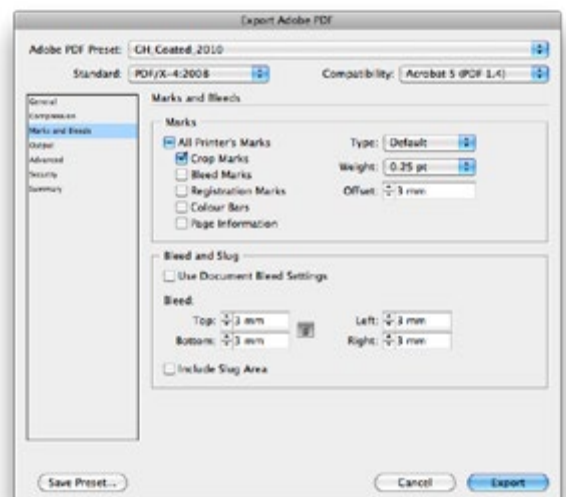
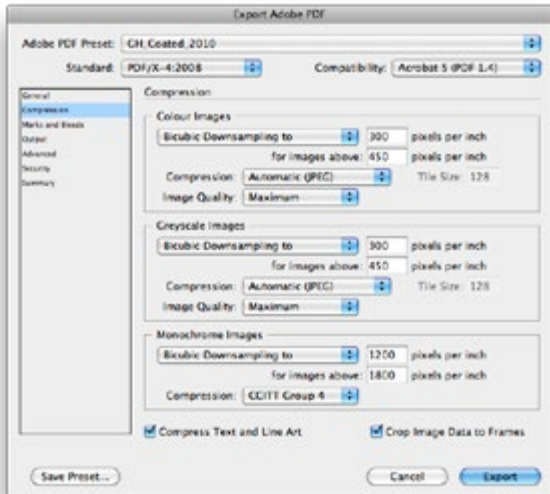
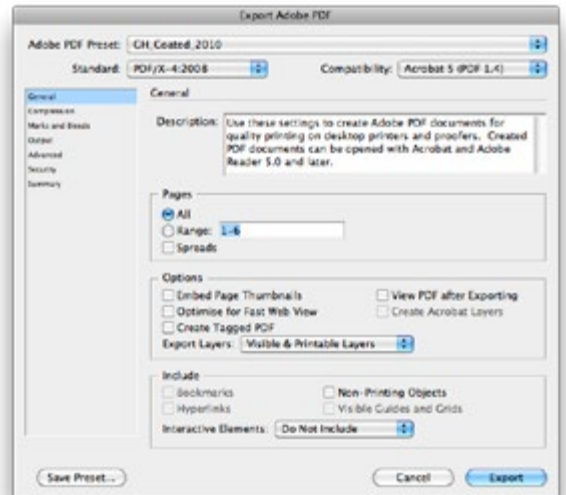
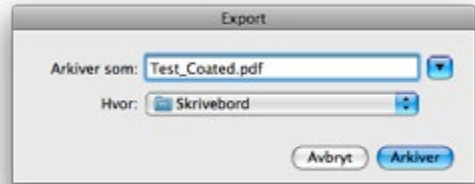
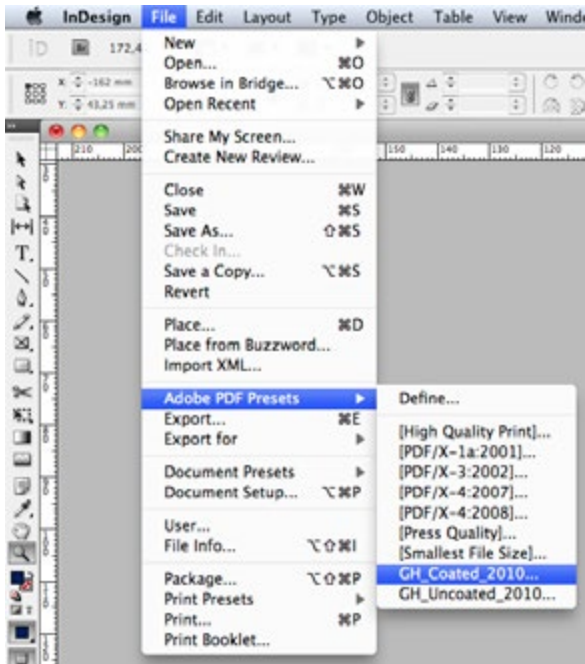
I RGB dialogboksen tildeler vi “Adobe RGB” profilen samtidig som vi velger “Enable All Profiles”. RGB-innstillingene er like for bestrøket papir og ubestrøket papir.



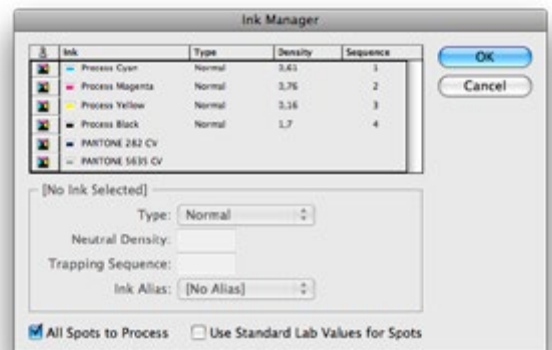
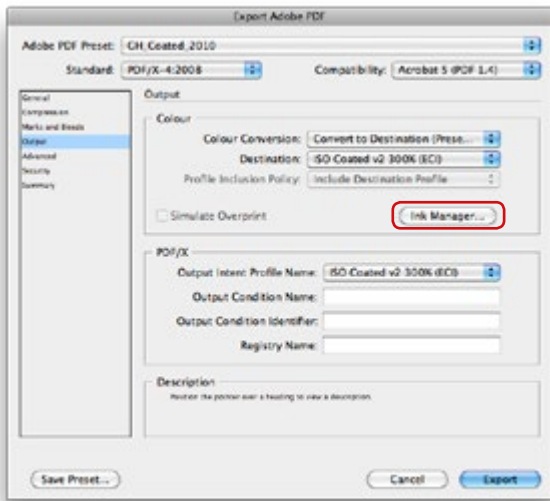
I CMYK dialogboksen tildeler vi “ISO Coated V2 300 (ECI)” hvis jobben skal trykkes på bestrøket papir, og “PSO Uncoated ISO12647 (ECI)” hvis jobben skal trykkes på ubestrøket papir. “Enable All Profiles” skal også velges her for å sikre korrekt konvertering.



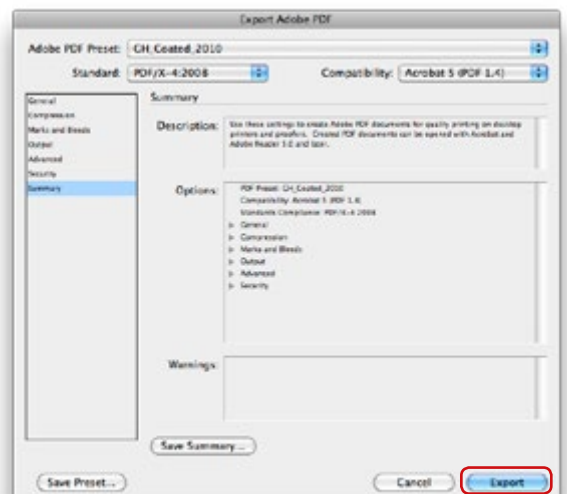
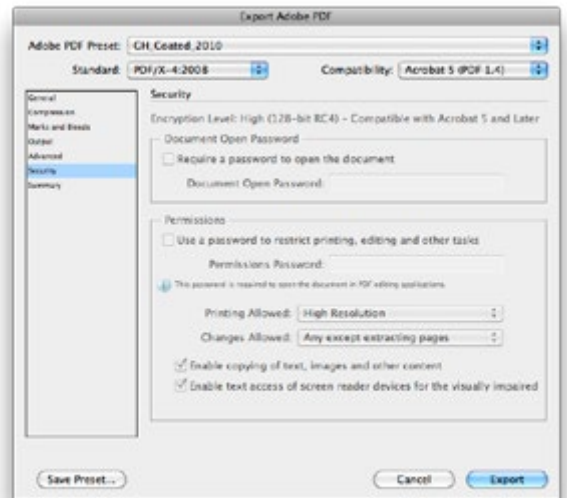
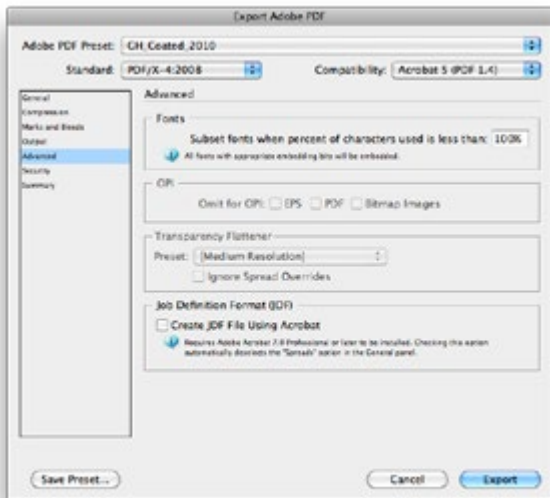
PDF Export (bestrøket papir):



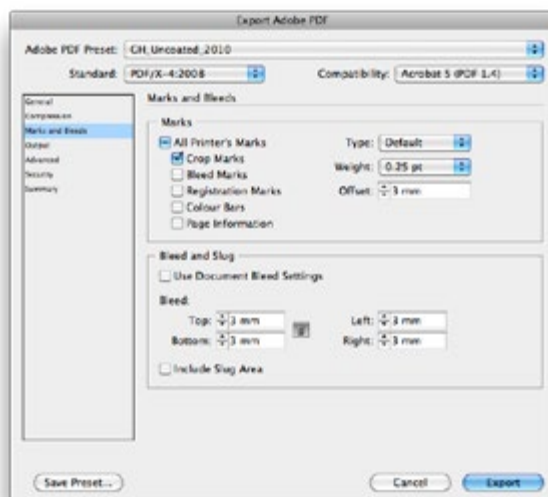
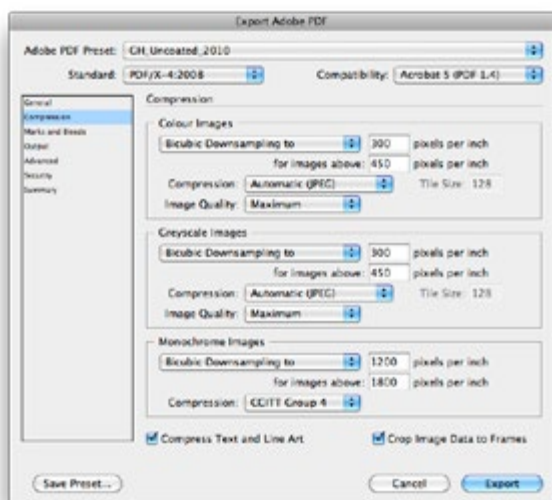
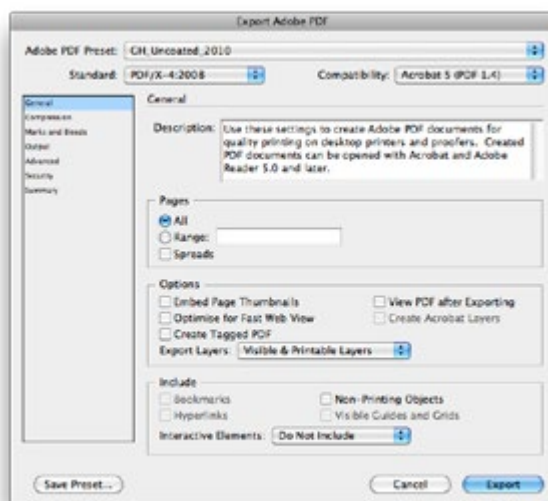
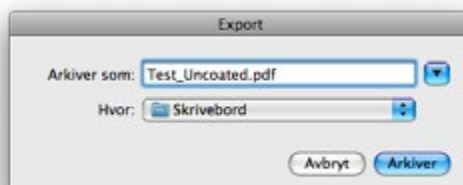
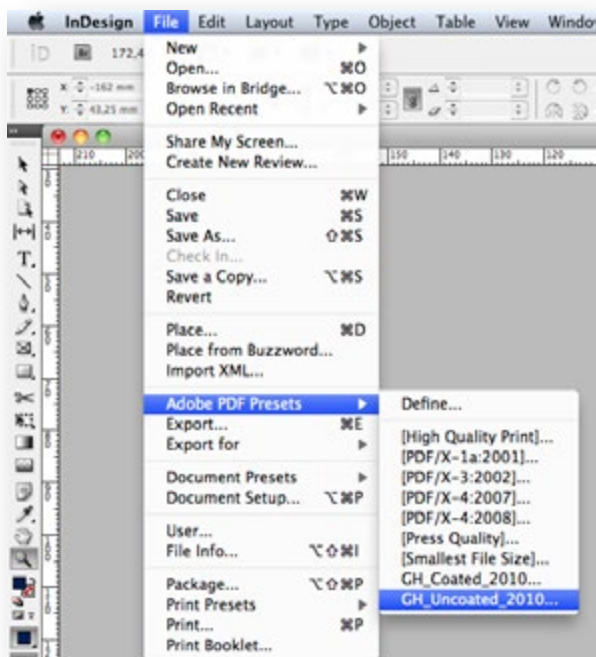
PDF Export for bestrøket papir forts:



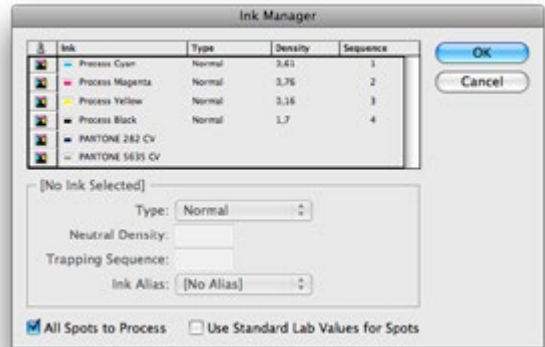
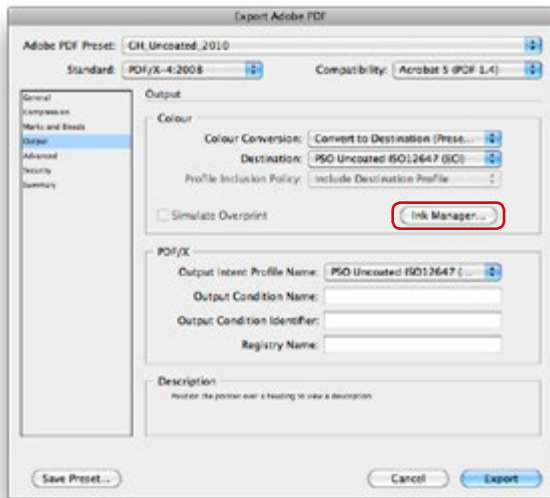
"All Spots to Process" skal være krysset av hvis jobben ikke skal inneholde Spot-farge(r).



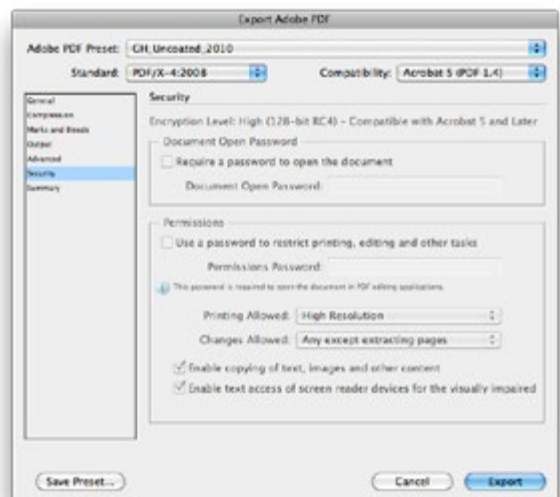
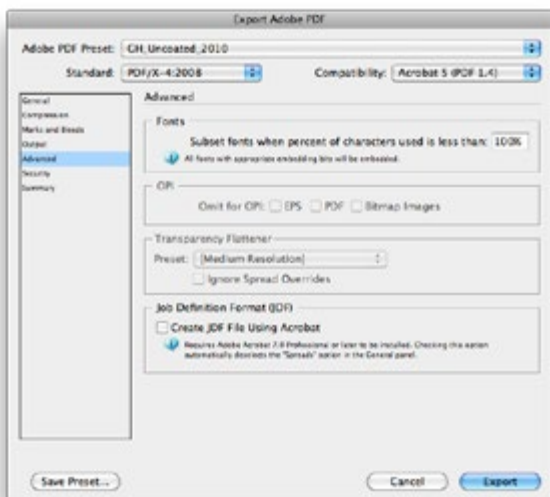
PDF Export (ubestrøket papir):



PDF Export for ubestrøket papir forts:



"All Spots to Process" skal være krysset av hvis jobben ikke skal inneholde Spot-farge(r).



Spørsmål?

Ved evt. spørsmål, ta kontakt med

Kjetil, tlf: 51 82 62 04

Ketil, tlf: 51 82 62 13

Svein, tlf: 51 82 62 14

Jørn, tlf: 932 58 368

Filoverføring:

www.gunnarshaug.no

